

The Path of the Profitable Priestess

Up-level your Inner Game...
Make money doing what you love!

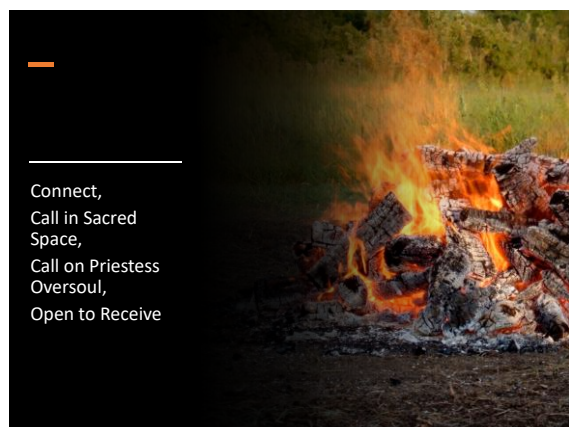
MODULE 6



Module 6

Alchemical Creation Priestess clearing and elemental power activation with Spirit.

1



3

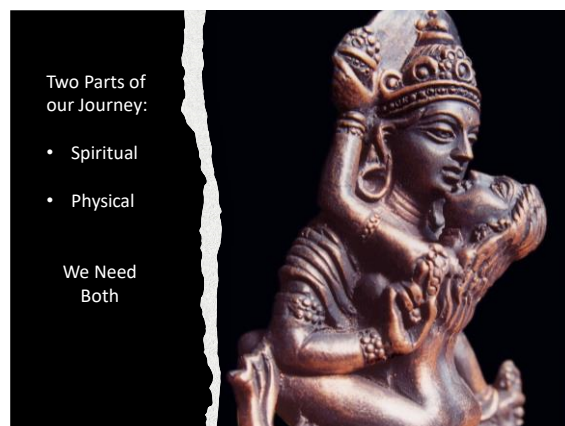
2



4



5



6



7



8

Alchemy Core

- Spirit in Alchemy
- Union of Soul & Spirit
- Union of Masculine & Feminine
- Oneness and Individuality
- Creation
- Power of Choice



9

What stands in the way of the union...

- Soul and Spirit
- You and the Divine
- Masculine and Feminine



10

Ego Voices
Not doing it right
Not perfect
I'm not getting anything.
Why is theirs better?
I can't do this.



11

What does it mean to be the Hollow Bone?



12

Core Chakra Guide

- The crown chakra, or seventh energy center, is located at the top of the head. Here our relationship to Spirit connects us with the spiritual realm.
- The sixth energy center, or brow chakra, is located in the forehead. Here we think, evaluate, and learn from our experiences in concrete, abstract, and intuitive ways.
- The fifth body center, or throat chakra, is located in the throat area. Here we work with our personal will and the expression of truth.
- The fourth chakra, the heart center, is located in the center of the chest and here we experience love, grief, compassion, and kindness.
- The third chakra, or solar plexus, is located in the upper abdomen, in the stomach area. The solar plexus serves as the seat of our personal power and of issues of self-esteem, responsibility, and self-respect.
- The second body center, the sacral chakra, is located in the lower abdomen just below the navel. This energy center provides the center for our sexuality, creativity, and abundance.
- The root chakra is located at the base of the spine, and corresponds to the legs, feet, and tailbone. Issues such as our survival, sense of security, and connection to our tribe live in this center. This chakra is positioned closest to the earth and is significant in our relationship to her. If we feel disconnected from the element of Earth or insecure in ourselves, pulling energy up from the earth can help to ground, anchor, and connect us to Earth's stable energy.



*First
Chakra:*



Root

13



*Second
Chakra:*



Sacral

14



*Third
Chakra:*



*Solar
Plexus*

15



*Fourth
Chakra:*



Heart

16



*Fifth
Chakra:*



Throat

17



*Sixth
Chakra:*



*Brow
or Third Eye*

18



19



Accessing
the Source
of the Sacred

20

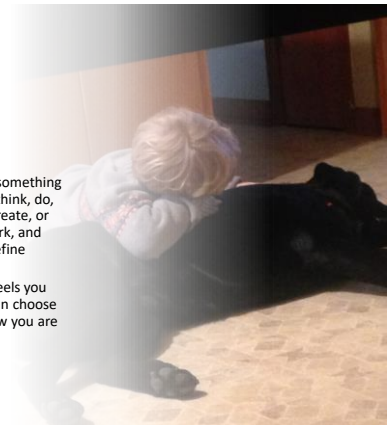


SPRIT
PRIMARY
POWER
CHOICE

21

CHOICE

- Each time you choose something – what you eat, wear, think, do, not do, express, feel, create, or where you will live, work, and play, you design and define yourself and your life.
- In situations where it feels you have no choice...you can choose your viewpoint and how you are going to respond.



22

FREE WILL

- Co-creator in training
- Learning from Spirit & the elements how to apply their energies in the conscious creation of your life.
- To fully explore your skills you are given free will -- the power to choose.



23

POWER OF CHOICE

- This sounds like such a simple power --one frequently under valued, yet is profound.
- This power of choice gives you the ability to create every area of your life and then change any aspect when it is appropriate.



24

Activate Spirit's Primary Power

- Activate Spirit's
- Primary Power of Choice.
- Activate Unified Field



25

SPIRIT

Appreciate and honor Spirit. Ask Spirit to show you how and why becoming a living bridge between Spirit and Matter is important to you as a Priestess or Priest.

Ask Spirit what you need as a Priestess or Priest to increase your capacity to bring Spirit into form.

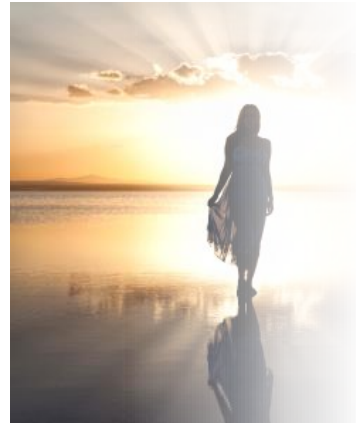
26



Continue to
Activate and
Integrate

Living Bridge
as Priestess

27



Gratitude
&
Closure
Ground

Contribute to Your Tracking Sheet

28