

*The  
Star Maiden  
Priestess  
Process*



**MODULE 26**





## MODULE 26

**Creation Chakra Clearing and  
Preparation for required Shamanic  
Death/Rebirth Transformation**





CALLING IN SACRED SPACE





SACRED STORY SHARING  
HOW HAS IT BEEN SINCE?



# Aspects of Your Shamanic Death/Rebirth Ceremony









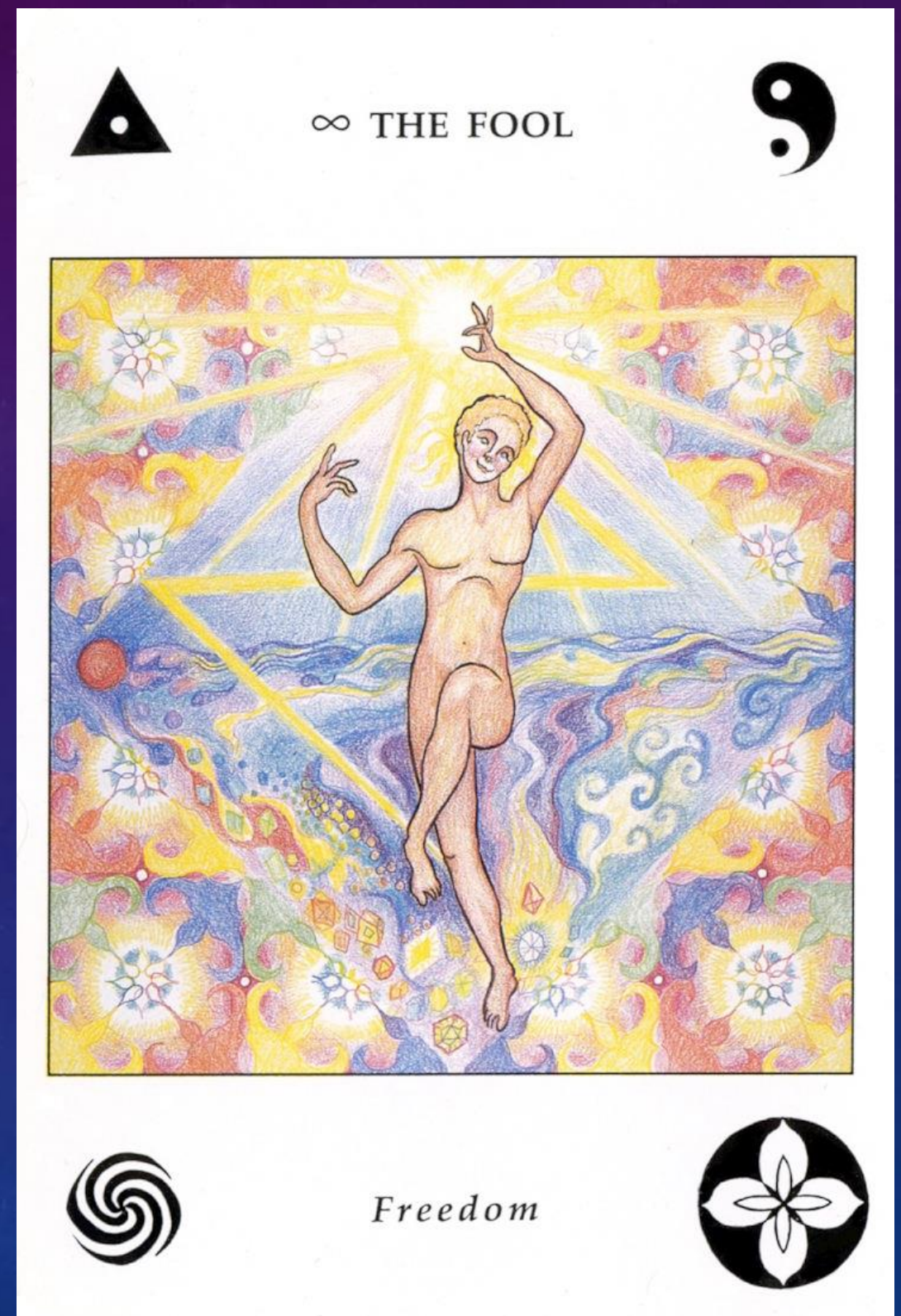
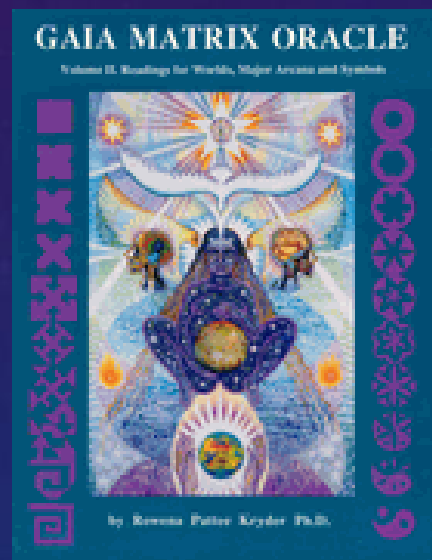




# NEW EARTH CELESTIAL EARTH

<http://creative-harmonics.org/>

Rowena Kryder







Old Earth  
Abyss of Reactivity  
Cross Bridge of Light  
New Earth  
Celestial Earth

New Earth Fulfilled World  
New Earth Formative World  
New Earth Creative World  
New Earth Spiritual World



















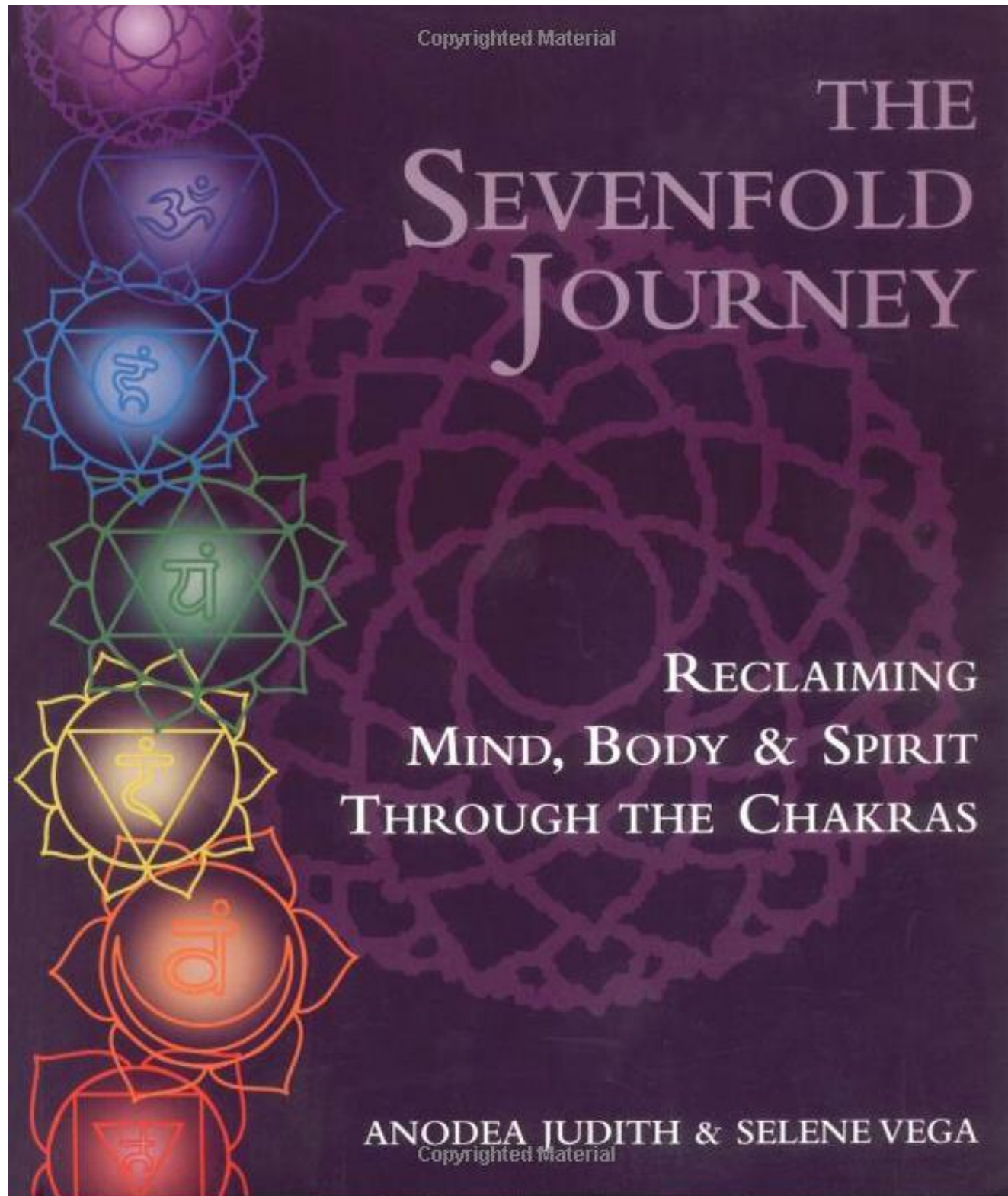
Copyrighted Material

# THE SEVENFOLD JOURNEY

RECLAIMING  
MIND, BODY & SPIRIT  
THROUGH THE CHAKRAS

ANODEA JUDITH & SELENE VEGA

Copyrighted Material



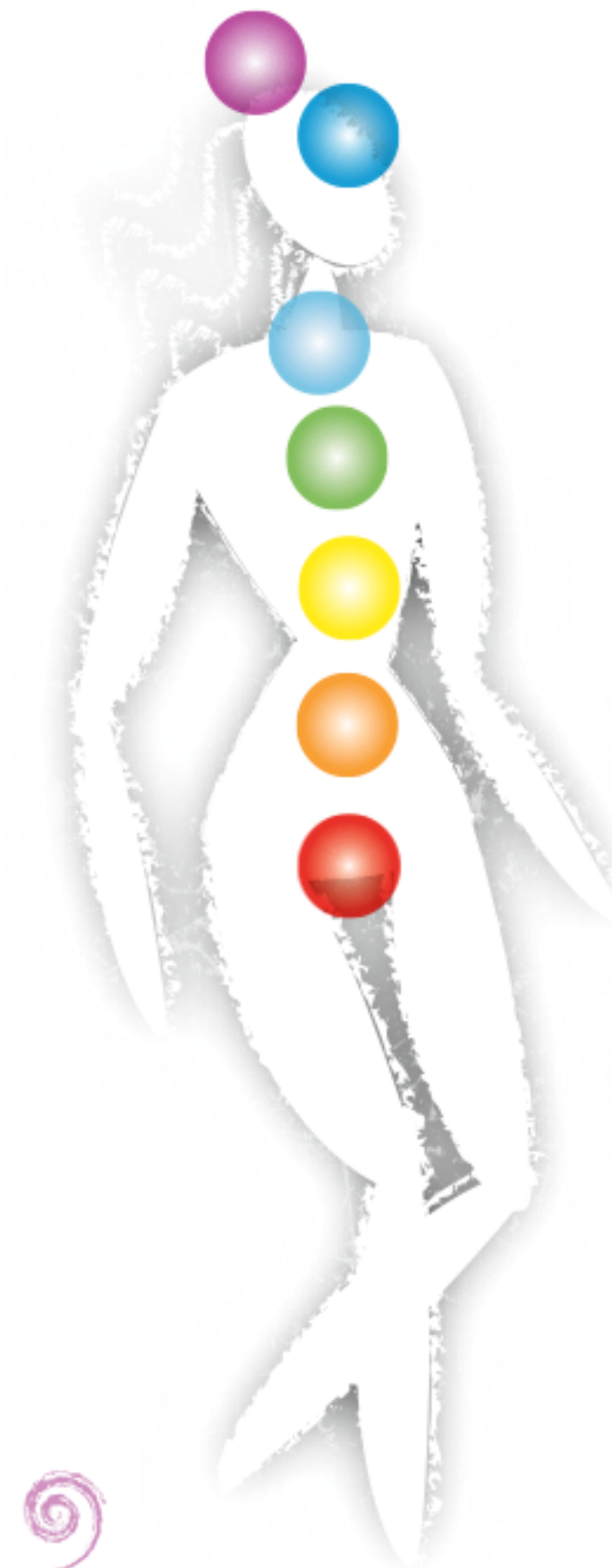




ENERGETIC  
CLARITY AT  
DEATH FORMS  
THE  
SPRINGBOARD  
FOR NEW  
NEXT LIFE



# Core Chakra Guide



■ *The crown chakra, or seventh energy center,* is located at the top of the head. Here our relationship to Spirit connects us with the spiritual realm.

■ *The sixth energy center, or brow chakra,* is located in the forehead. Here we think, evaluate, and learn from our experiences in concrete, abstract, and intuitive ways.

■ *The fifth body center, or throat chakra,* is located in the throat area. Here we work with our personal will and the expression of truth.

■ *The fourth chakra, the heart center,* is located in the center of the chest and here we experience love, grief, compassion, and kindness.

■ *The third chakra, or solar plexus,* is located in the upper abdomen, in the stomach area. The solar plexus serves as the seat of our personal power and of issues of self-esteem, responsibility, and self-respect.

■ *The second body center, the sacral chakra,* is located in the lower abdomen just below the navel. This energy center provides the center for our sexuality, creativity, and abundance.

■ *The root chakra* is located at the base of the spine, and corresponds to the legs, feet, and tailbone. Issues such as our survival, sense of security, and connection to our tribe live in this center. This chakra is positioned closest to the earth and is significant in our relationship to her. If we feel disconnected from the element of Earth or insecure in some way, pulling energy up from the earth can help to ground, anchor, and connect us to Earth's stable energy.





*First  
Chakra:*



*Root*





*Second  
Chakra:*



*Sacral*





*Third  
Chakra:*



*Solar  
Plexus*







*Fourth  
Chakra:*



*Heart*





*Fifth  
Chakra:*



*Throat*





*Sixth  
Chakra:*



*Brow  
or Third Eye*



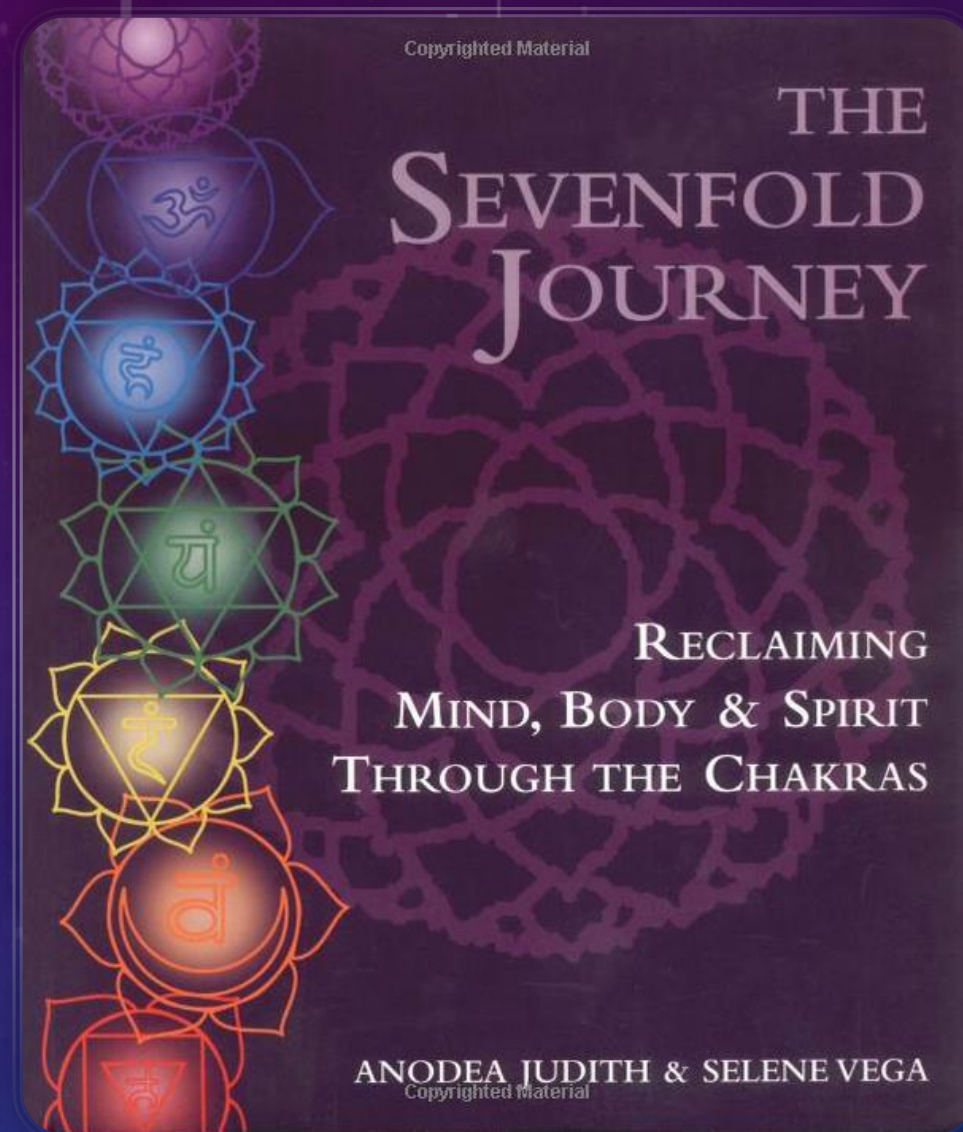
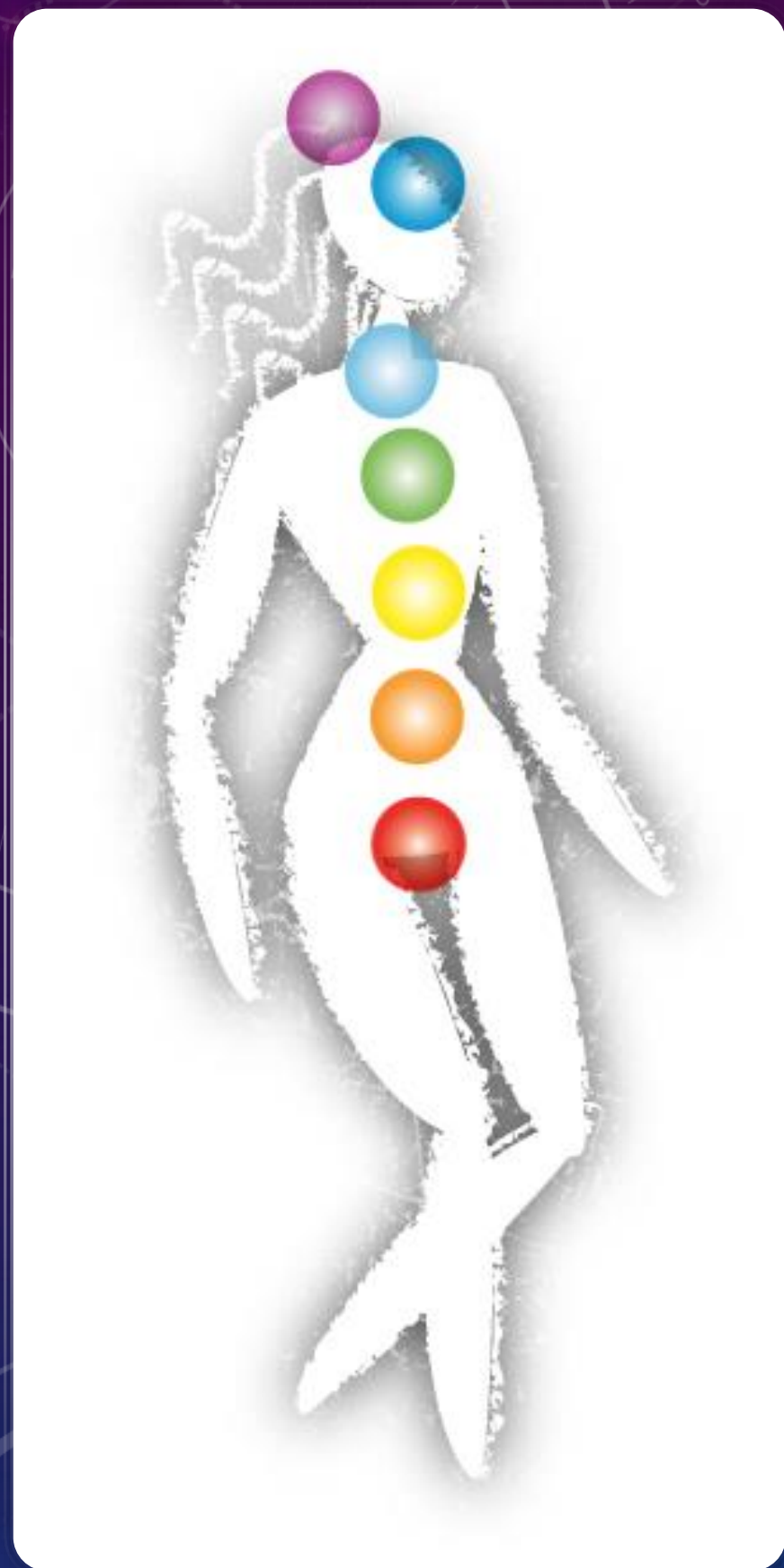


*Seventh  
Chakra:*



*Crown*





PATH OF MANIFESTATION: DOWN  
PATH OF LIBERATION: UP





# GRATITUDE & CLOSURE